

alianza

Logistics





Alianza Logistics

The new global logistics

In a dynamic and changing environment, at **Alianza Logistics we constantly adapt to the needs of our clients**, regardless of the context in which they are located. We are committed to providing **efficient and personalized logistics solutions** for each need that arises.

Our Mission: Concentrate the logistics need in a single point with a flexible service and generating trust. **Our Vision:** The commitment is to improve the logistics sector, becoming a reference brand, dedicating our efforts to creativity and innovation, to value and respect for our people. **Our values** focus on people, service and results. We support well-being, promote cooperation and commit to clear goals, building relationships based on mutual trust.



- **MARITIME TRANSPORT**

Freight forwarders specializing in maritime freight transport. Supporting and advising our clients on their shipments to/from any part of the world. The maritime division has 3 main departments: export, import and triangular operations (cross trade).



- **LAND TRANSPORTATION**

National road transport, import, export and intra-community transport of dry and refrigerated loads and export of FTL Loads and groupage from the Mediterranean to Europe. We have our own fleet of 100 trailers, and we are shareholders of the Valiente Group, with a fleet of 200 complete units.



- **AIR TRANSPORTATION**

Our air transport department carries out import and export of temperature-controlled perishables, dry goods, dangerous goods or high value cargo. We offer express, standard and hand carry modes of transport.



Corporate Social Responsibility

Sustainable Logistics

At Grupo **Alianza Logistics** we seek to ensure that sustainability is integrated into each one of the projects we carry out with the **aim of promoting changes in our sector towards more responsible practices**, generating shared value for society.



Our strategy as a group of companies is aligned with The **Ten Principles proposed by the Global Compact** and the **Sustainable Development Goals promoted by the United Nations**.

Our **objective is to implement actions that, aligned with our strategy of sustainability**, contribute to the development and well-being of people, the environment and of society in general.



[Access our Sustainability Report 2024](#)



Valencian Certificate



United Nations Pact



Carbon Footprint and Forest Alianza Certificate



Silver Seal Ecovadis 2025



ASECAM Social Enterprise Award

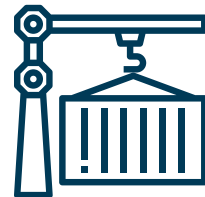


Lean & Green

Services adapted to your needs

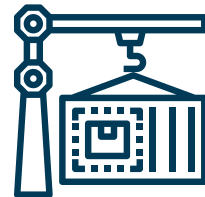
Flexible and customized structure.

Our professionals are distributed in different points, guaranteeing great coverage throughout the world, offering services with decisive, flexible and professional logistics.



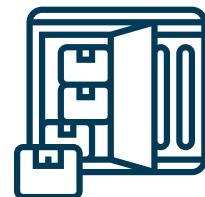
FULL CONTAINER (FCL)

For door-to-door or port-to-port shipments. This service is ideal for those clients who want to transport large amounts of merchandise and need an exclusive container for their cargo. We take care of the entire process, from **cargo collection** at origin to **destination delivery**, ensuring that your cargo reaches its final destination in a timely and safe manner.



GROUPAGE (LCL)

We also offer **groupage cargo services (LCL)** to optimize the times and costs of your shipments, arranging a wide variety of routes. This service is best suited for those customers who have smaller loads that do not fill a full container.



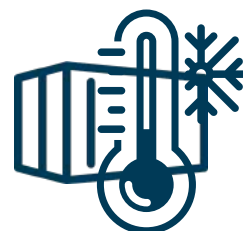
CONSOLIDATED (FCL/LCL)

We offer a consolidation service in which we complete the load of several suppliers of our clients in the same container for a greater optimization of resources.



CROSS TRADE

A convenient and efficient option for those customers who need to send goods **between two different countries**, without having to organise transshipment in the country of the intermediary/ordering party.



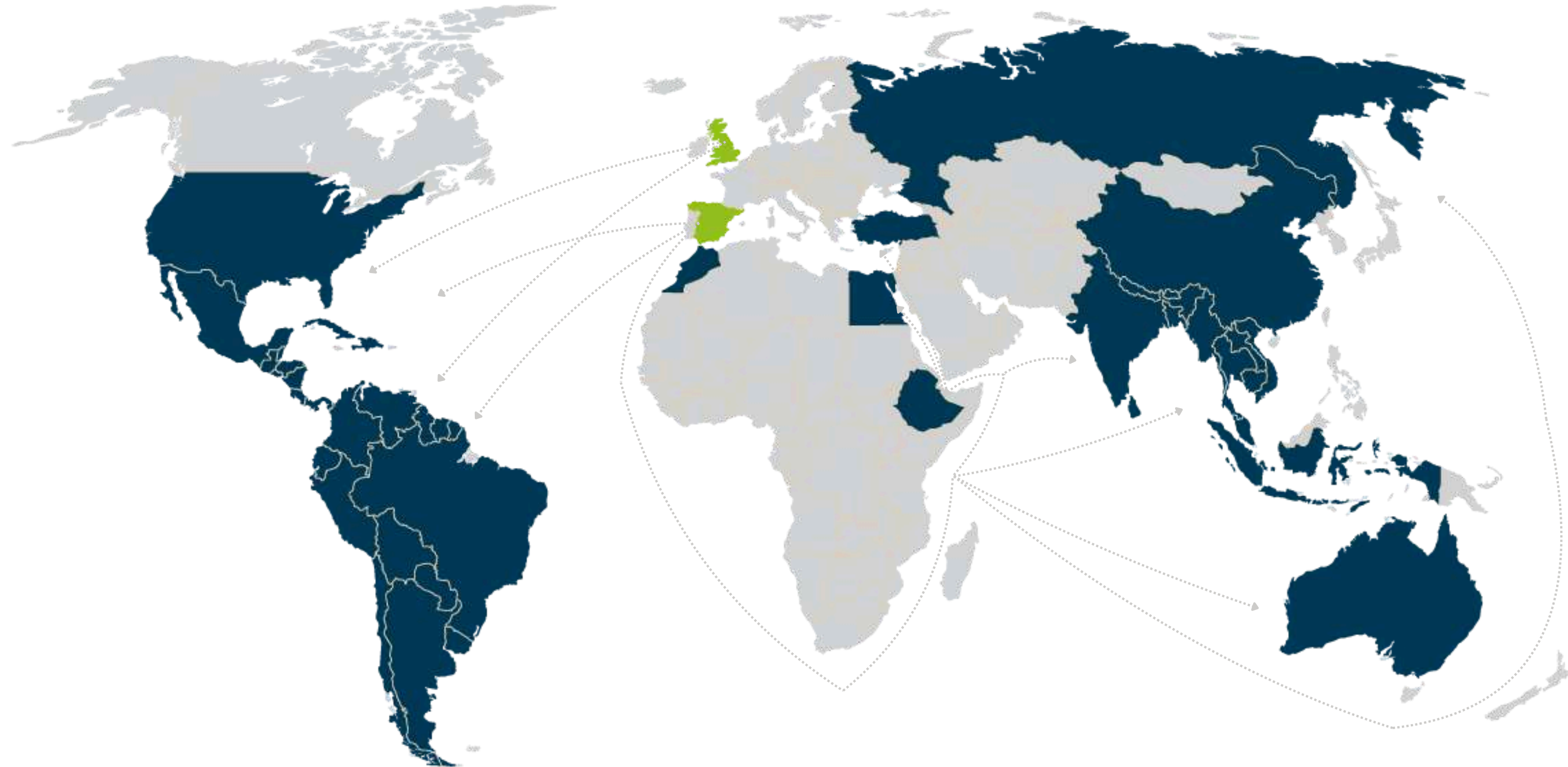
REFRIGERATED CARGO (REEFER)

For shipments that require strict **temperature control**, such as food products, pharmaceuticals, or other perishable goods. We provide refrigerated container transport (reefer) ensuring that the cargo maintains the required temperature throughout the entire journey. Our team monitors the conditions from origin to destination, guaranteeing the quality of temperature-sensitive products during maritime transport.

Our origins and maritime destinations

We transport to more than 190 countries


At our shipping company, we operate in more than **190 countries**, guaranteeing weekly departures, reduced transit times and competitive rates. We offer quality services from the ports of Barcelona, Valencia, Algeciras, Felixstowe and London to Central and South America. In addition, we manage shipments from China, Turkey, India, Thailand, Vietnam and Indonesia to Valencia, Barcelona, Algeciras, Bilbao and United Kingdom, ensuring efficient and reliable logistics to meet the needs of our customers.





Our air transport


Value added services

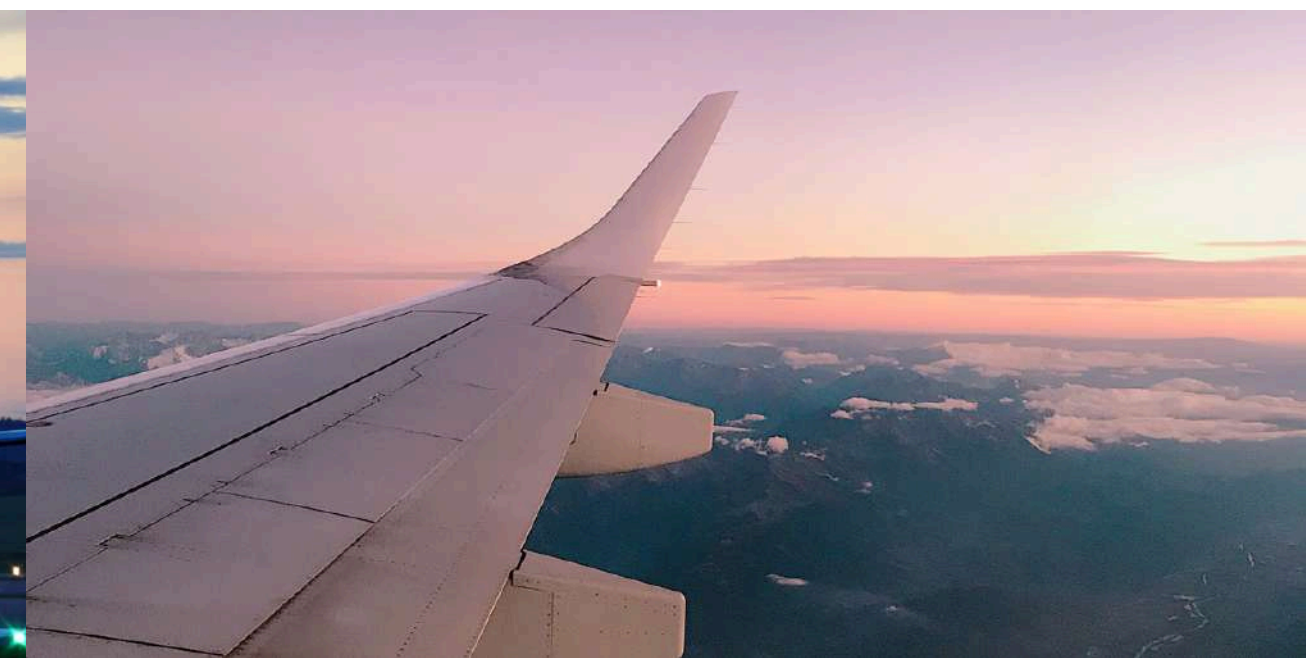
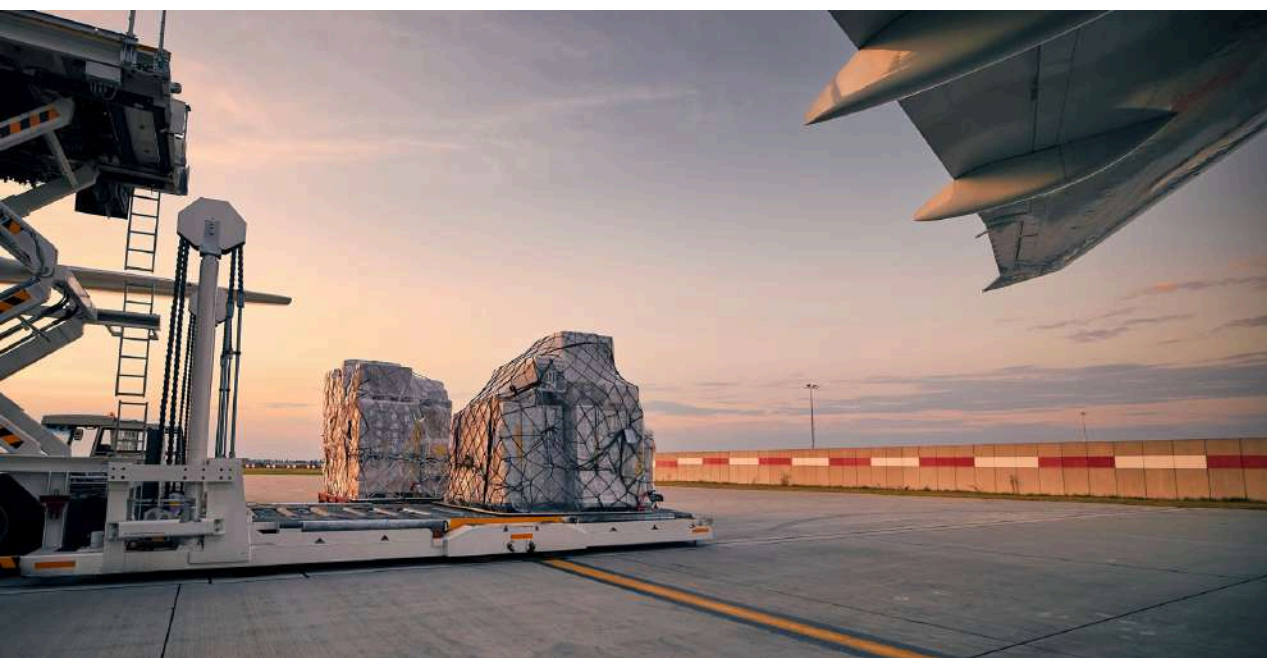
We carry out air transport for import, export, multimodal and triangular operations, and we also highlight the following value-added services:

 **Service for conditioning and packaging goods** for air transport in our partner warehouses at the main airports in Spain or at the client's facilities using phytosanitary treatment and certified by the ISPM 15 seal.

 **Wide coverage.** Do you need to hire an air transport service for your goods? We transport your goods to any part of the world, as we work with correspondents to reach more than 190 countries on the 5 continents.

 **IATA Agent.** We are IATA Agents and have commercial agreements with the main airlines. We guarantee priority in cargo and offer preferential rates and security in the chain, complying with international air transport regulations.

 **Security and guarantee.** We track your goods at all times, complying with international IATA regulations. In addition, we offer optional insurance for your goods, always adapting to your unique and specific needs.

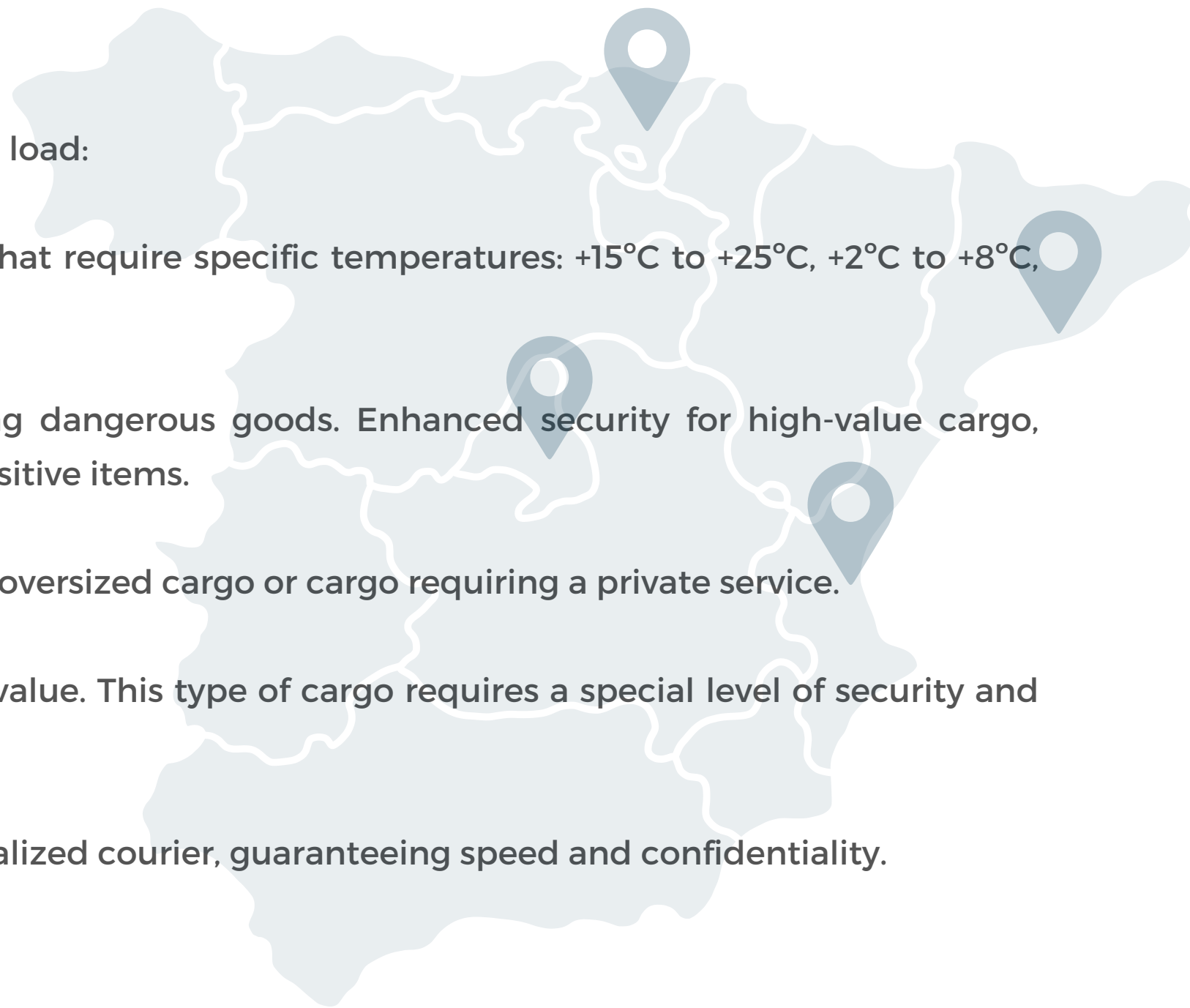


Our air transport

Worldwide coverage

We offer air transport services with various options adapted to the specific needs of each load:

- 1. Transport of perishable goods and controlled temperature.** Solutions for products that require specific temperatures: +15°C to +25°C, +2°C to +8°C, and -25°C to -15°C, ideal for food, medicines and biological samples.
- 2. Transport of dangerous goods.** Certified and with safe procedures for transporting dangerous goods. Enhanced security for high-value cargo, including monitoring and specialized personnel for luxury products, technology and sensitive items.
- 3. Charter.** Exclusive flights with customized schedules and routes, especially for urgent, oversized cargo or cargo requiring a private service.
- 4. High Value Cargo:** Any merchandise that has a high monetary, personal or business value. This type of cargo requires a special level of security and protection.
- 5. Hand Carry Service.** Urgent and small volume shipments carried personally by a specialized courier, guaranteeing speed and confidentiality.



Dangerous goods



Temperature controlled

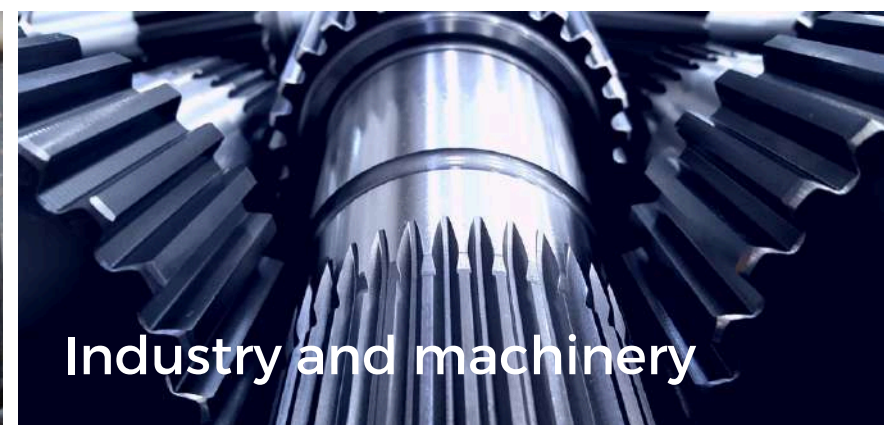
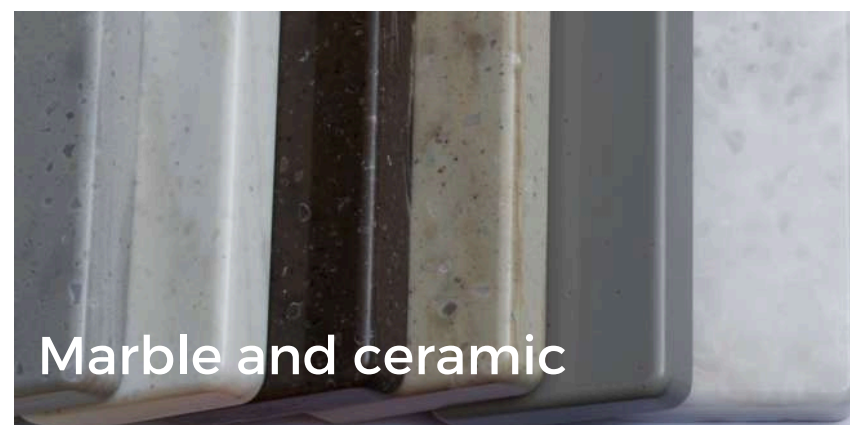
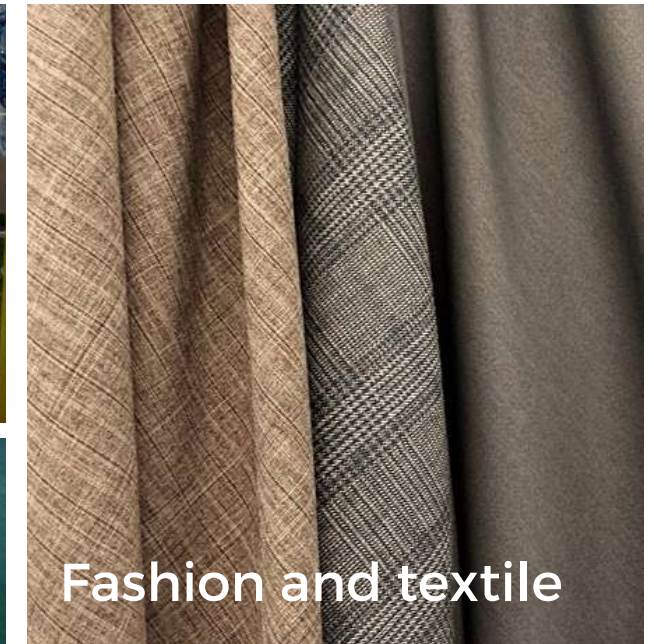
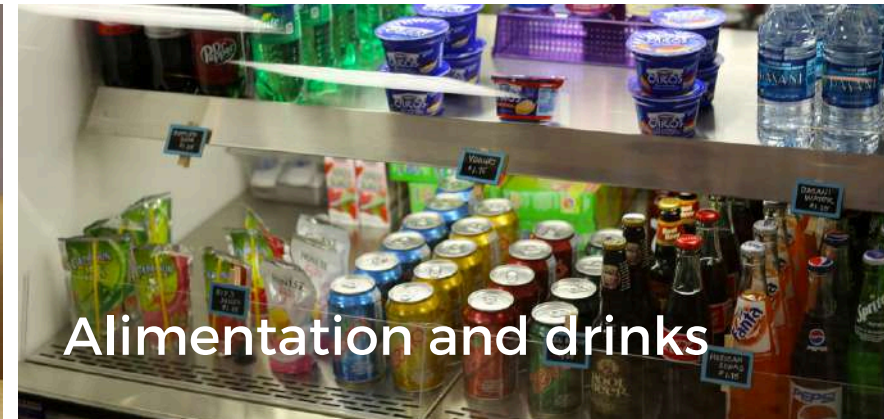
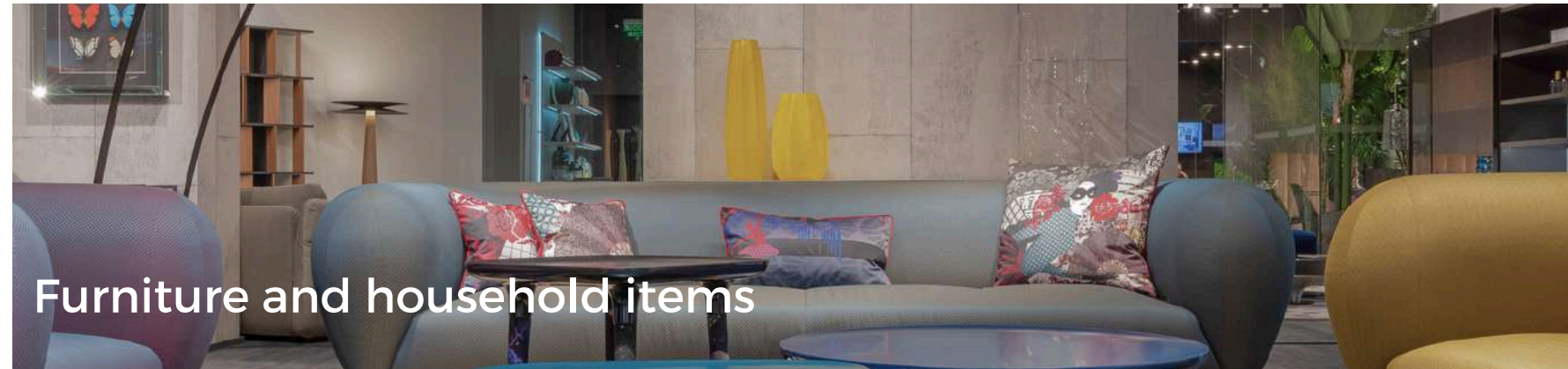


High Value Cargo

Typology of our merchandise

We adapt to your load

Our maritime transport is adapted and specialized in different types of merchandise, including **fashion and textiles, furniture and household goods, automotive industry, beverages and food, industry and machinery, time critical, and marble and ceramics.** We guarantee an efficient and safe service, preserving the integrity and quality of each product transported.



Value added services

Complete logistics solutions

At Alianza Logistics, we understand that **international transport** is a vital part of the international supply chain and for this reason we strive to offer value-added services that cover all the marine transport needs of our clients, from **cargo security** and protection to the management of customs procedures and the complete logistics of the supply chain.

Here are some of these **services**:

MERCHANDISE INSURANCE (AD VALOREM)



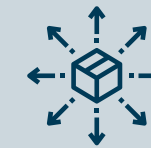
Merchandise insurance (ad valorem) to guarantee the **protection of your cargo** during the transport process. This insurance covers possible damages or losses that your merchandise may suffer, providing peace of mind and security.

CUSTOMS



We offer advice and management of **import and export DUAS, DAES, T-1, Sanitary Certificates, Soivre, Cites, EUR-1** and other documents necessary for customs clearance.

STORAGE, HANDLING AND DISTRIBUTION



We carry out storage services, as well as cargo handling services, such as **container consolidation and deconsolidation, palletizing**, labelling and packaging. In addition, we offer distribution services.



We are members of the largest global network in the world, **WCA Network**, which allows us to manage the transport of our clients anywhere in the world. **We take care of organizing any service related to marine and air transport and we guarantee the efficiency and optimization of costs and times** in all phases thanks to our standardized service and the agreements we have with agents around the world. Our partners are subjected to rigorous quality controls and internal evaluations, which allows us to guarantee a high level of quality at all levels of service.

Value-added services

Excellence in Oversight



At Alianza Logistics, we recognize that thorough and tailored monitoring is crucial to the success of any operation within the international supply chain. Consequently, we emphasize the significance of this monitoring, consistently fostering the training of our team and embracing the most innovative technologies to enhance every stage of the process.

Below, we outline several of the resources currently under observation:

Traditional oversight

- **Monitoring tables:**
 - Tailored to the client's requirements.
 - Numerous updates each day.
- **Email:**
 - Good practice dictates that the entire team is well-versed in exemplary standards.
 - Respond to all emails within the same day with comprehensive information.
 - Meticulous and committed considerations for each order.

Alliance Oversight

- **Client portal:**
 - Real-time tracking tool.
 - Information tailored to the client's specifications.
 - Documentation is accessible on the portal.



Our Locations

Geographic Coverage

We have a presence throughout the Spanish territory to cover the needs of our clients, in this way we can provide a wide variety of services directly.



Headquarters



Commercial office



Logistics Center



ALMENARA
Headquarters

C/ Victoria Kent, 30, bajo 2.
12590 Almenara, Castellón
T. +34 96 478 46 00
info@alianza-gt.com



CASTELLÓN
Commercial office

C/ Cerdá de Tallada 2A.
12004. Castellón.
T. +34 96 478 46 00
info@alianza-gt.com



VALENCIA
Commercial office

C/ Profesor Beltrán
Baguena 4, (Ofic. 413).
46009, Valencia
T. +34 96 478 46 00
info@alianza-gt.com



VALENCIA
Logistics Center

Av. de Serra 198, 46130,
Massamagrell. Valencia
T. +34 96 478 46 00
info@alianza-gt.com



BARCELONA
Commercial office

Pl. Europa, 2-4, Torre
Copisa Pnta 9, L'Hospitalet
de Llobregat, Barcelona,
08902
T. +34 96 478 46 00
info@alianza-gt.com



TORIJA
Logistics Center

Poligono S. Urbanizable
Industr. S1, 158, 19190
Torija, Guadalajara
T. +34 96 478 46 00
info@alianza-gt.com



CÓRDOBA
Commercial office

Pol. Ind, La Torrecilla. Av.
de la Torrecilla, 36, 2º, 3
(Edif. La Torre bloque 2),
14013, Córdoba
T. +34 96 478 46 00
info@alianza-gt.com



IPSWICH
Commercial office

70-72 The Havens,
Ipswich IP3 9BF, Reino
Unido
T. +34 96 478 46 00
info@alianza-gt.com



BARCELONA
Logistics Center

C/ Longitudinal 1, N° 20.
08040 Mercabarna. Bcn
T. +34 96 478 46 00
info@alianza-gt.com



MÁLAGA
Commercial office

C/ Sierra de Gialda, 4,
29016, Málaga, (Edificio
complementario)
T. +34 964 78 46 00
info@alianza-gt.com



ALMERÍA
Commercial office

C/ Paseo de Almería 45, 2º,
2. 04001. Almería.
T. +34 96 478 46 00
info@alianza-gt.com



SEVILLA
Commercial office

C/ Fdo Quiñones, P. -1, 8B,
41910, Tomares, Sevilla
T. +34 96 478 46 00
info@alianza-gt.com



SEVILLA
Logistics Center

Calle Mastín, 1, 41701 Dos
Hermanas, Sevilla
+34 96 478 46 00
info@alianza-gt.com



JAÉN
Commercial office

C/ Tres Fuentes 1,
23440 Baeza, Jaén.
T. +34 96 478 46 00
info@alianza-gt.com



ZARAGOZA
Commercial office

Av. de Ranillas nº 1B, Plta. 2,
Ofic. 2B, Parque empresarial
Dinamiza, 50018, Zaragoza
T. +34 96 478 46 00
info@alianza-gt.com

alianza

Logistics



Alianza Logistics



Alianza Logistics



www.alianza-logistics.com